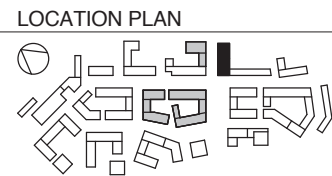


- LEGEND:**
- A. ENTRANCE LEVEL DOOR 800mm MIN WIDTH WITH CIRCULATION ROUTE TO DOOR 1500mm
  - B. INTERNAL CIRCULATION DOORS IN UNITS MIN CLEAR WIDTH 775mm WITH 300mm NIBS
  - C. 1500mm x 1500mm TURNING CIRCLE FOR FUTURE SHOWER PROVISION WITH CAPPED DRAINAGE
  - D. 750mm CLEAR SPACE TO SIDES AND FOOT OF BED WITHIN AT LEAST ONE MAIN BEDROOM
  - E. SLIDING DOOR TO BALCONY 800mm MIN CLEAR OPENING WIDTH

- NOTES:**
1. ALL BATHROOMS PROVIDED WITH SUITABLE REINFORCED WALLS FOR FUTURE ADAPTATIONS
  2. CEILINGS DESIGNED TO SUPPORT EXPANDED BOLT FIXING WITH VOIDS TO BE CLEAR OF SERVICES AT POTENTIAL LOCATIONS
  3. ALL DOORS CAPABLE OF OPENING BEYOND 90 DEGREES



NOTES

DATE	REV	DESCRIPTION	CHK
04.12.14	P1	Planning Application Issue	JR

WEST HENDON - BLOCK H3&H4 REVISION

**026-01-452** P1

Typical Unit Access 1B-2P 02  
 Planning SCALE 1 : 50@A3