

LEGEND:

A. ENTRANCE LEVEL ACCESS DOOR 800mm MIN CLEAR OPENING WIDTH

B. INTERNAL CIRCULATION DOORS IN UNITS MIN CLEAR OPENING WIDTH 775mm WITH 300mm NIBS

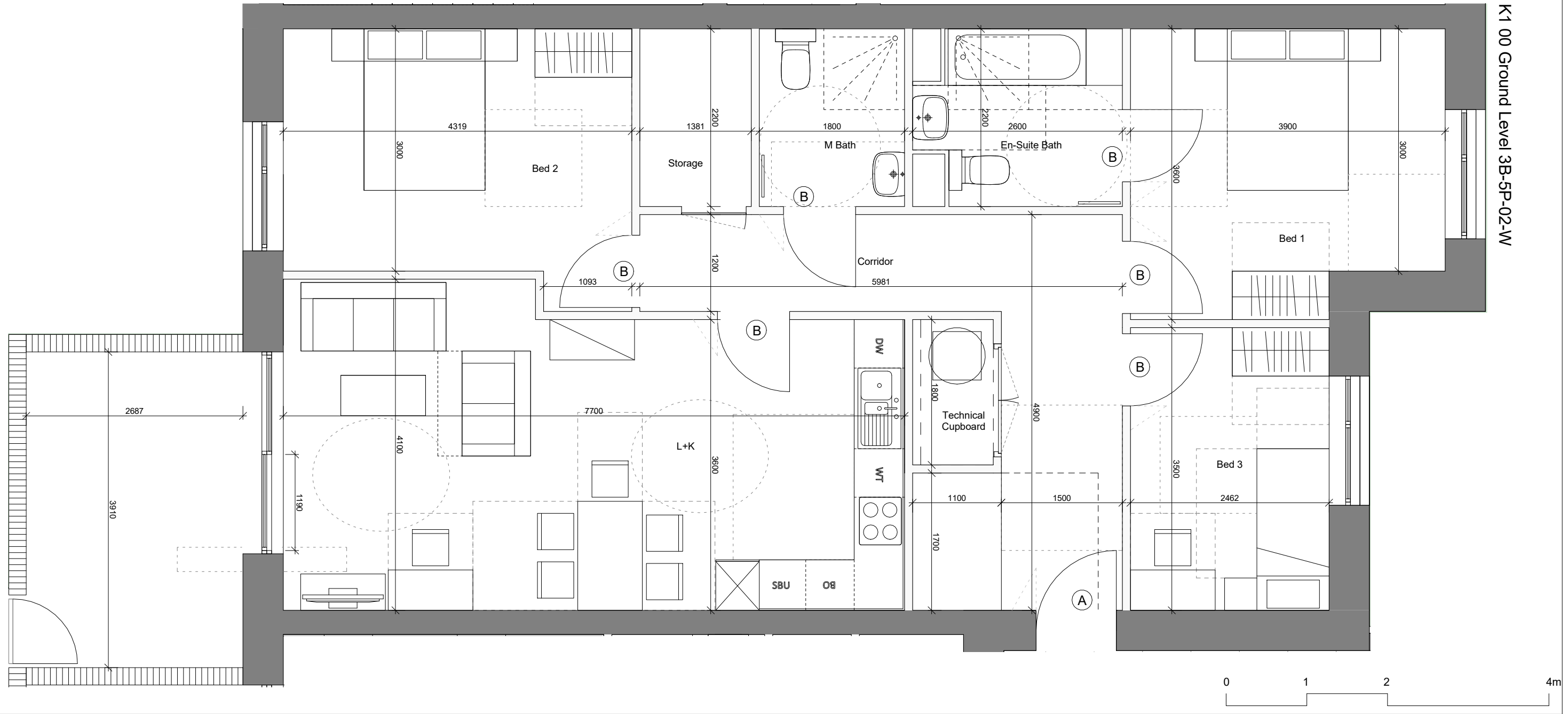
NOTES:

1. WHDG-12.2.4 THERE WILL BE PROVISION FOR FUTURE HOIST INSTALLATION (IN MAIN BEDROOM) AND CEILING WILL BE STRENGTHENED TO ALLOW RUN INTO ACCESSIBLE BATHROOM, ALONG WITH NECESSARY ELECTRICS ETC.
2. WHDG-11.2.10 WALLS IN THE ACCESSIBLE BATHROOM WILL BE ABLE TO ACCOMMODATE A RANGE OF SUPPORTS AND FITTINGS, SUCH AS ADJUSTABLE HEIGHT BASINS, SHOWER SEATS AND HAND RAILS.
3. WHDG-11.2.6 THERE WILL BE LEVEL ACCESS INTO SHOWER AREA AND IT WILL BE LAID SO THAT THERE IS A GENTLE FALL TO THE MAIN GULLEY/OUTLET.
4. WHDG-11.2.10CEILING IN THE ACCESSIBLE BATHROOM WILL BE ABLE TO ACCOMMODATE FIXINGS FOR FUTURE POTENTIAL CEILING HOIST.

Area Schedule (NIA) K1 3B-5P-02-W

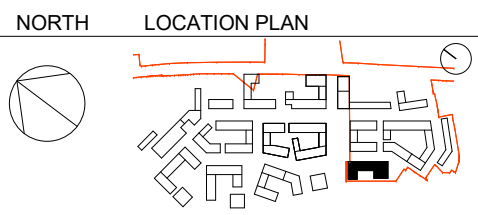
Core	Name	Area	Bedrooms	Bedspaces
K1	3B-5P-02 W K1	97.64 m ²	3	5

3B-5P-02 W K1: 1



BARRATT
— LONDON —

MAKOWER ARCHITECTS
24-26 Great Suffolk Street
Bankside, London SE1 0UE
telephone +44 (0)20 7100 5550
enquiries@makowerarchitects.com



DATE	REV	DESCRIPTION	CHK
160930	1	PLANNING APPLICATION ISSUE	JR
161125	2	PLANNING APPLICATION ISSUE	JR

WEST HENDON PHASE 4

058-K-07-506

K1 3B-5P-02-W

REVISION

P2

scale: 1 : 50 @ A3