

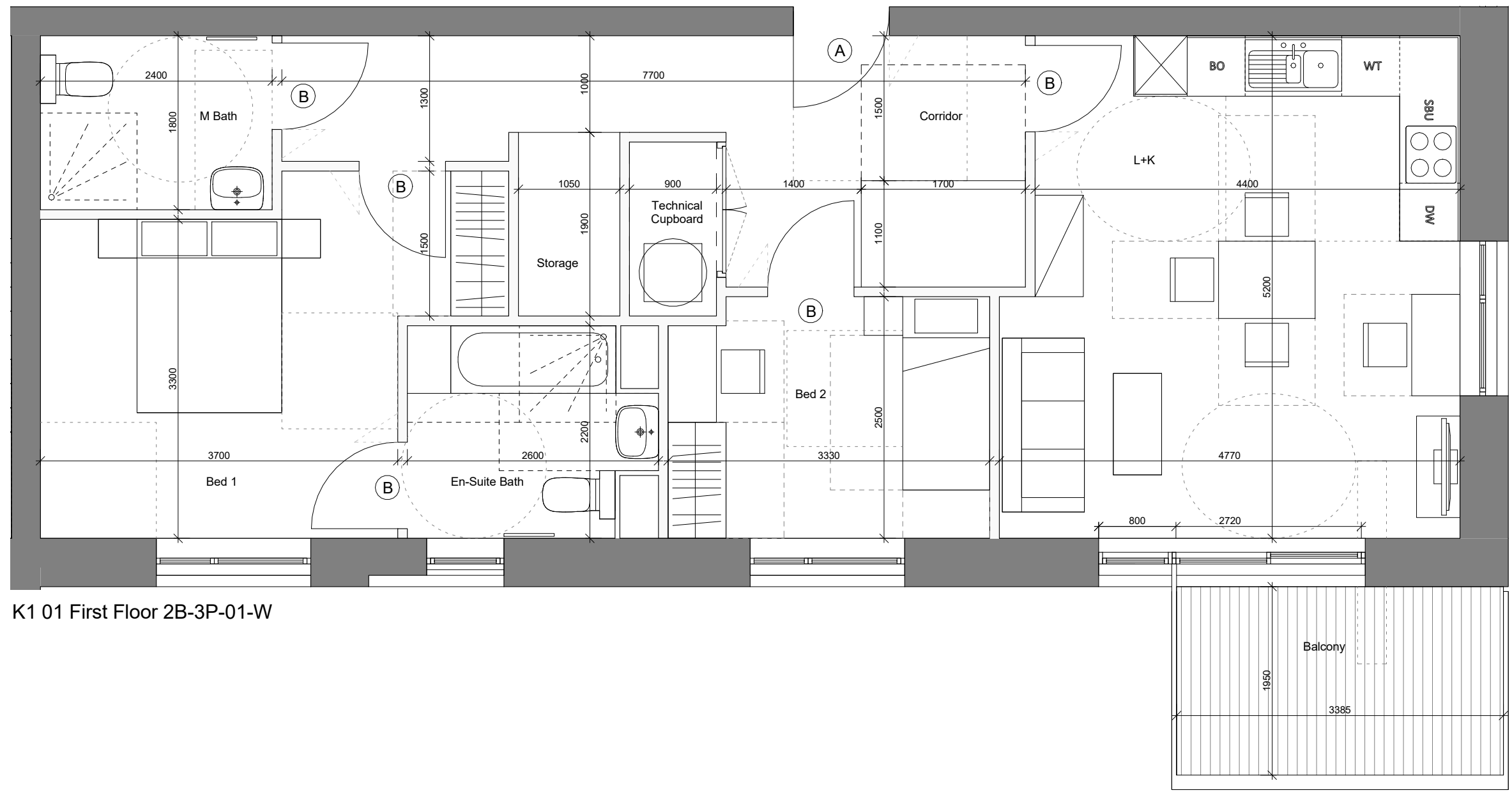
- LEGEND:**
- A. ENTRANCE LEVEL ACCESS DOOR 800mm MIN CLEAR OPENING WIDTH
 - B. INTERNAL CIRCULATION DOORS IN UNITS MIN CLEAR OPENING WIDTH 775mm WITH 300mm NIBS

- NOTES:**
1. WHDG-12.2.4 THERE WILL BE PROVISION FOR FUTURE HOIST INSTALLATION (IN MAIN BEDROOM) AND CEILING WILL BE STRENGTHENED TO ALLOW RUN INTO ACCESSIBLE BATHROOM, ALONG WITH NECESSARY ELECTRICS ETC.
 2. WHDG-11.2.10 WALLS IN THE ACCESSIBLE BATHROOM WILL BE ABLE TO ACCOMMODATE A RANGE OF SUPPORTS AND FITTINGS, SUCH AS ADJUSTABLE HEIGHT BASINS, SHOWER SEATS AND HAND RAILS.
 3. WHDG-11.2.6 THERE WILL BE LEVEL ACCESS INTO SHOWER AREA AND IT WILL BE LAID SO THAT THERE IS A GENTLE FALL TO THE MAIN GULLEY/OUTLET.
 4. WHDG-11.2.10 CEILING IN THE ACCESSIBLE BATHROOM WILL BE ABLE TO ACCOMMODATE FIXINGS FOR FUTURE POTENTIAL CEILING HOIST.

Area Schedule (NIA) K1 2B-3P-01-W

Core	Name	Area	Bedrooms	Bedspaces
K1	2B-3P-01 W K1	76.44 m ²	2	3

2B-3P-01 W K1: 5

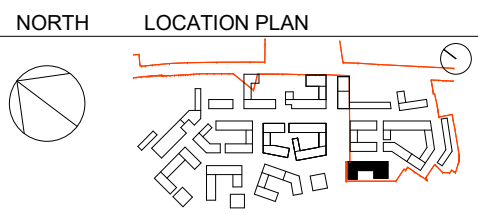


K1 01 First Floor 2B-3P-01-W



BARRATT
— LONDON —

MAKOWER ARCHITECTS
24-26 Great Suffolk Street
Bankside, London SE1 0UE
telephone +44 (0)20 7100 5550
enquiries@makowerarchitects.com



DATE	REV	DESCRIPTION	CHK
160930	1	PLANNING APPLICATION ISSUE	JR
161125	2	PLANNING APPLICATION ISSUE	JR

WEST HENDON PHASE 4 REVISION

058-K-07-503 P2

K1 2B-3P-01 W

scale: 1 : 50 @ A3