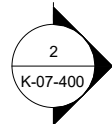




1 North East - Baystudy 1

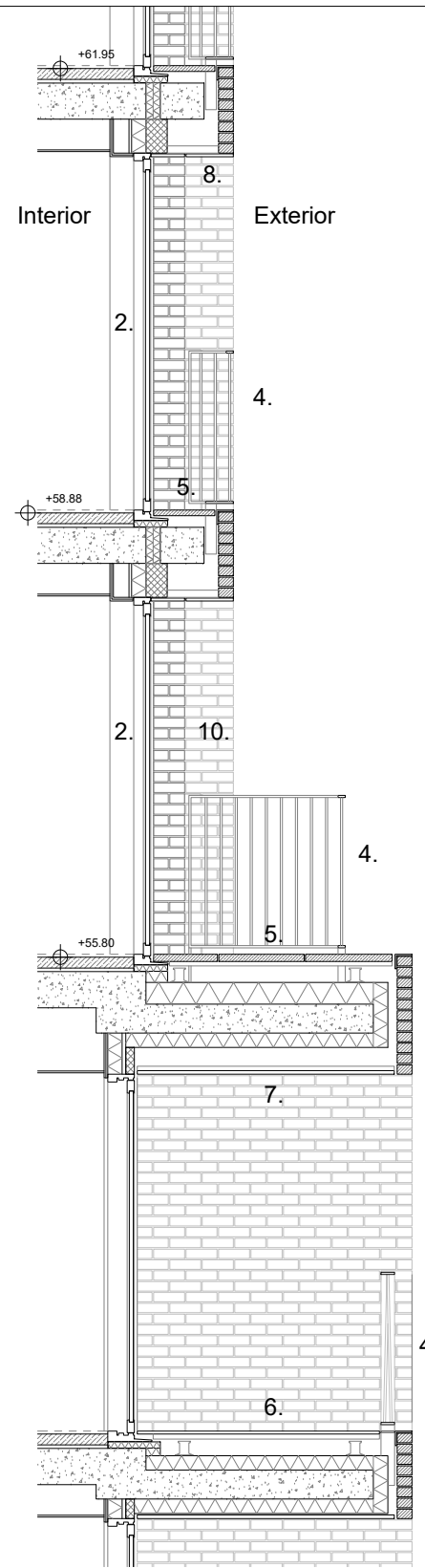


06 K Sixth Floor  
+61.950

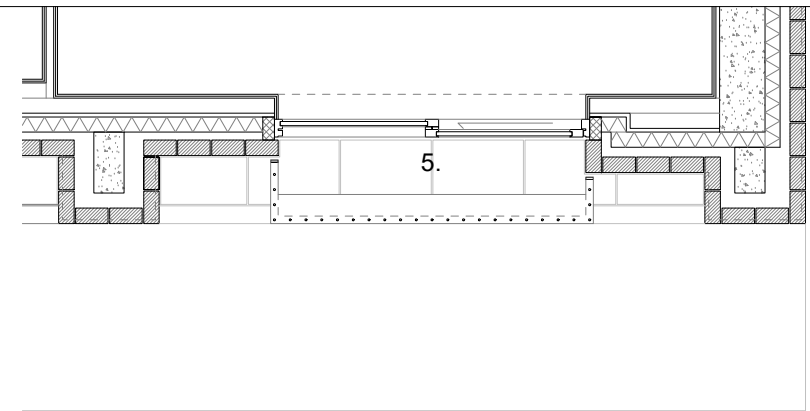
05 K Fifth Floor  
+58.875

04 K Fourth Floor  
+55.800

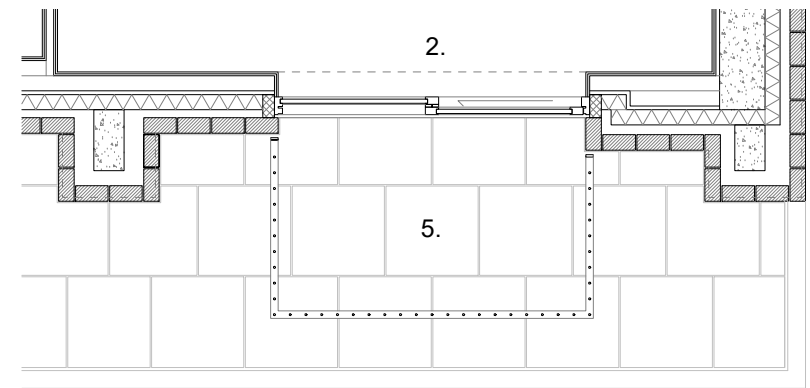
03 K Third Floor  
+52.500



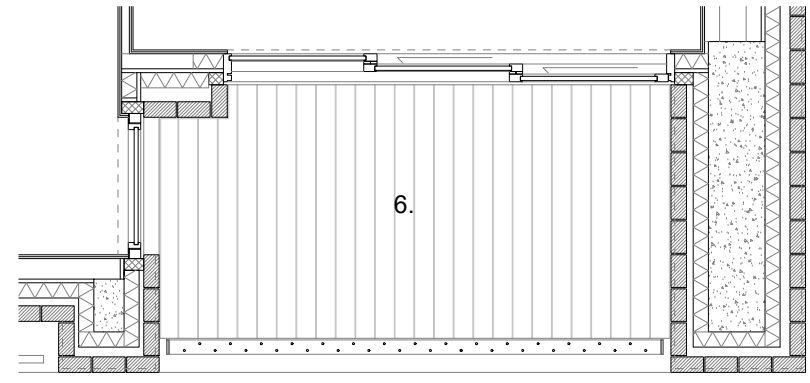
2 Section - Baystudy 1



5 K2 Fifth Floor - Baystudy 1



4 K2 Fourth Floor - Baystudy 1



3 K2 Third Floor - Baystudy 1

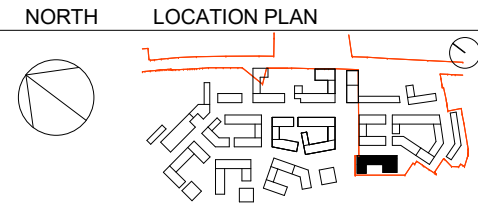
Legend:

- |                                  |   |
|----------------------------------|---|
| 1. Aluminium window system       | 10. Brick pier                                  |
| 2. Aluminium sliding door system | 11. Precast coping                              |
| 3. Perforated brick wall         | 12. Brick balustrade with internal metal finish |
| 4. Metal balustrade              | 13. Recess brick panel                          |
| 5. Concrete paver                | 14. Brick facade                                |
| 6. Timber decking                | 15. Metal plate                                 |
| 7. Render soffit                 | 16. Exposed concrete finish                     |
| 8. Metal soffit                  | 17. Cantilevered glass balustrade               |
| 9. Brick recess 25mm             | 18. Brick soldier course                        |



**BARRATT**  
— LONDON —

**MAKOWER ARCHITECTS**  
24-26 Great Suffolk Street  
Bankside, London SE1 0UE  
telephone +44 (0)20 7100 5550  
enquiries@makowerarchitects.com



DATE	REV	DESCRIPTION	CHK
160930	1	PLANNING APPLICATION ISSUE	JR
161125	2	PLANNING APPLICATION ISSUE	JR

WEST HENDON PHASE 4  
**058-K-07-400**  
Bay Study 01

scale: 1 : 50 @ A3

REVISION  
P2