

LEGEND:

A. ENTRANCE LEVEL ACCESS DOOR 800mm MIN CLEAR OPENING WIDTH

B. INTERNAL CIRCULATION DOORS IN UNITS MIN CLEAR OPENING WIDTH 775mm WITH 300mm NIBS

NOTES:

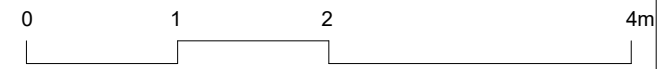
1. WHDG-12.2.4 THERE WILL BE PROVISION FOR FUTURE HOIST INSTALLATION (IN MAIN BEDROOM) AND CEILING WILL BE STRENGTHENED TO ALLOW RUN INTO ACCESSIBLE BATHROOM, ALONG WITH NECESSARY ELECTRICS ETC.
2. WHDG-11.2.10 WALLS IN THE ACCESSIBLE BATHROOM WILL BE ABLE TO ACCOMMODATE A RANGE OF SUPPORTS AND FITTINGS, SUCH AS ADJUSTABLE HEIGHT BASINS, SHOWER SEATS AND HAND RAILS.
3. WHDG-11.2.6 THERE WILL BE LEVEL ACCESS INTO SHOWER AREA AND IT WILL BE LAID SO THAT THERE IS A GENTLE FALL TO THE MAIN GULLEY/OUTLET.
4. WHDG-11.2.10CEILING IN THE ACCESSIBLE BATHROOM WILL BE ABLE TO ACCOMMODATE FIXINGS FOR FUTURE POTENTIAL CEILING HOIST.

Area Schedule (NIA) 2B-3P-01-W

Core	Name	Area	Bedrooms	Bedspaces
H2	2B-3P-01-W	75.04 m ²	2	3

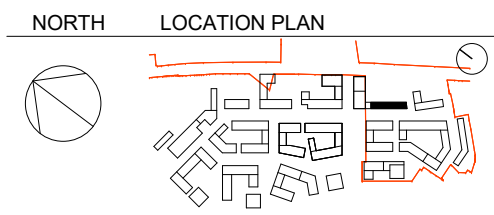
2B-3P-01-W: 1

00 H2 Ground Level 2B-3P-01-W



BARRATT
— LONDON —

MAKOWER ARCHITECTS
24-26 Great Suffolk Street
Bankside, London SE1 0UE
telephone +44 (0)20 7100 5550
enquiries@makowerarchitects.com



DATE	REV	DESCRIPTION	CHK
160930	1	PLANNING APPLICATION ISSUE	JR
161125	2	PLANNING APPLICATION ISSUE	JR

TEMPLATES
058-H2-07-505
2B-3P-01-W
REVISION
P2

scale: 1 : 50 @ A3