

- LEGEND:**
- A.** ENTRANCE LEVEL ACCESS DOOR 800mm MIN CLEAR OPENING WIDTH
  - B.** INTERNAL CIRCULATION DOORS IN UNITS MIN CLEAR OPENING WIDTH 775mm WITH 300mm NIBS

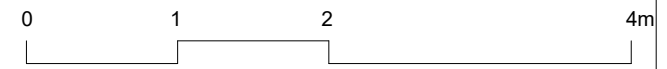
- NOTES:**
1. WHDG-12.2.4 THERE WILL BE PROVISION FOR FUTURE HOIST INSTALLATION ( IN MAIN BEDROOM) AND CEILING WILL BE STRENGTHENED TO ALLOW RUN INTO ACCESSIBLE BATHROOM, ALONG WITH NECESSARY ELECTRICS ETC.
  2. WHDG-11.2.10 WALLS IN THE ACCESSIBLE BATHROOM WILL BE ABLE TO ACCOMMODATE A RANGE OF SUPPORTS AND FITTINGS, SUCH AS ADJUSTABLE HEIGHT BASINS, SHOWER SEATS AND HAND RAILS.
  3. WHDG-11.2.6 THERE WILL BE LEVEL ACCESS INTO SHOWER AREA AND IT WILL BE LAID SO THAT THERE IS A GENTLE FALL TO THE MAIN GULLEY/OUTLET.
  4. WHDG-11.2.10 CEILING IN THE ACCESSIBLE BATHROOM WILL BE ABLE TO ACCOMMODATE FIXINGS FOR FUTURE POTENTIAL CEILING HOIST.

Area Schedule (NIA) 2B-3P-02-W

Core	Name	Area	Bedrooms	Bedspaces
H2	2B-3P-02	69.92 m <sup>2</sup>	2	3

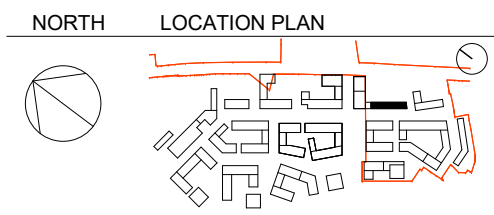
2B-3P-02: 8

01 H2 First Floor 2B-3P-02 W



**BARRATT**  
— LONDON —

**MAKOWER ARCHITECTS**  
24-26 Great Suffolk Street  
Bankside, London SE1 0UE  
telephone +44 (0)20 7100 5550  
enquiries@makowerarchitects.com



DATE	REV	DESCRIPTION	CHK
160930	1	PLANNING APPLICATION ISSUE	JR
161125	2	PLANNING APPLICATION ISSUE	JR

TEMPLATES  
**058-H2-07-506**  
2B-3P-02-W  
REVISION  
P2

scale: 1 : 50 @ A3