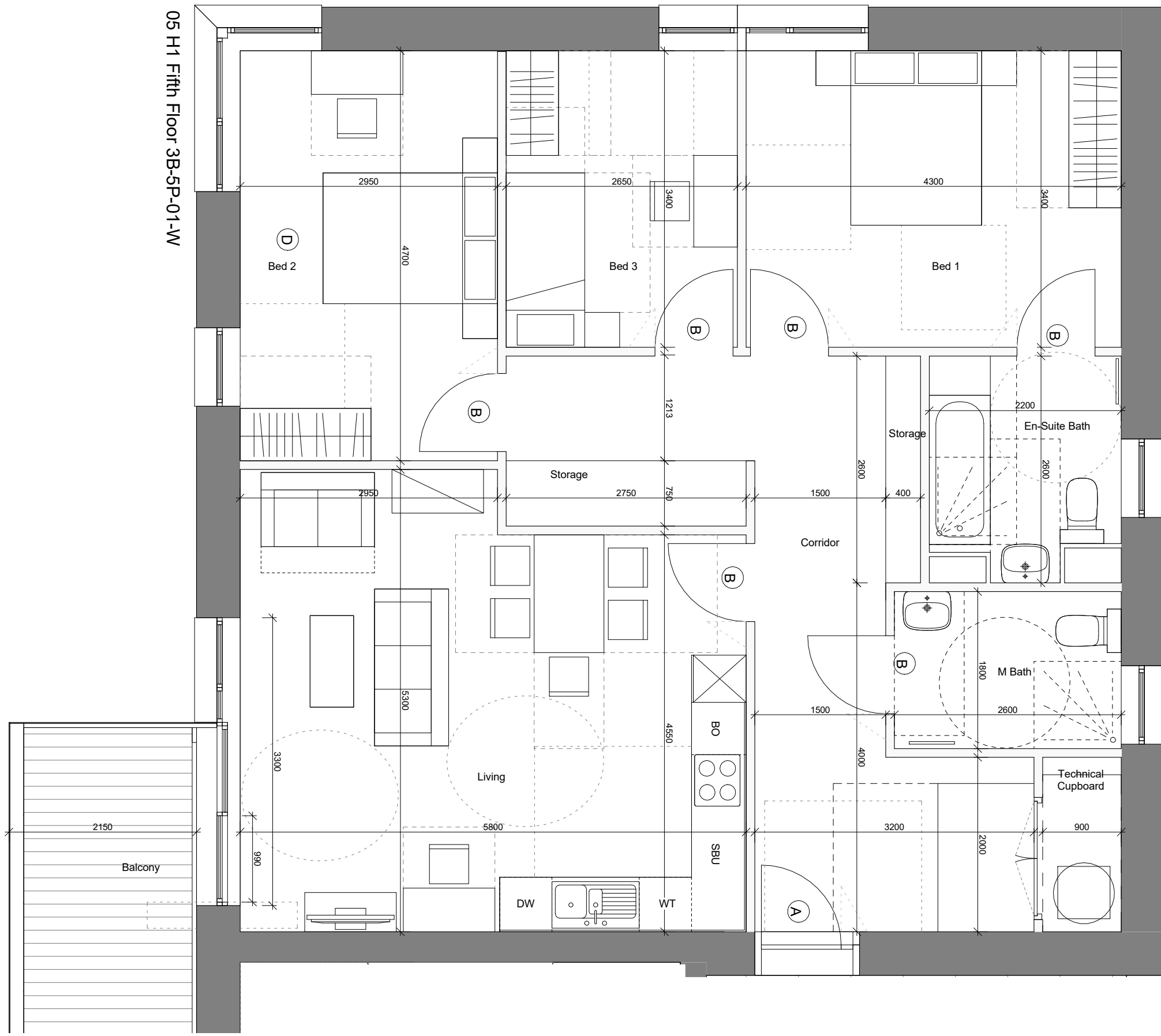


05 H1 Fifth Floor 3B-5P-01-W



**\* Wheelchair Unit**

**LEGEND:**

**A.** ENTRANCE LEVEL ACCESS DOOR 800mm MIN CLEAR OPENING WIDTH

**B.** INTERNAL CIRCULATION DOORS IN UNITS MIN CLEAR OPENING WIDTH 775mm WITH 300mm NIBS

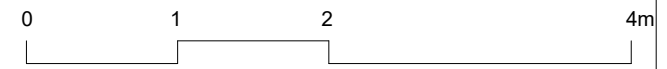
**NOTES:**

1. WHDG-12.2.4 THERE WILL BE PROVISION FOR FUTURE HOIST INSTALLATION ( IN MAIN BEDROOM) AND CEILING WILL BE STRENGTHENED TO ALLOW RUN INTO ACCESSIBLE BATHROOM, ALONG WITH NECESSARY ELECTRICS ETC.
2. WHDG-11.2.10 WALLS IN THE ACCESSIBLE BATHROOM WILL BE ABLE TO ACCOMMODATE A RANGE OF SUPPORTS AND FITTINGS, SUCH AS ADJUSTABLE HEIGHT BASINS, SHOWER SEATS AND HAND RAILS.
3. WHDG-11.2.6 THERE WILL BE LEVEL ACCESS INTO SHOWER AREA AND IT WILL BE LAID SO THAT THERE IS A GENTLE FALL TO THE MAIN GULLEY/OUTLET.
4. WHDG-11.2.10CEILING IN THE ACCESSIBLE BATHROOM WILL BE ABLE TO ACCOMMODATE FIXINGS FOR FUTURE POTENTIAL CEILING HOIST.

Area Schedule (NIA) 3B-5P-01-W

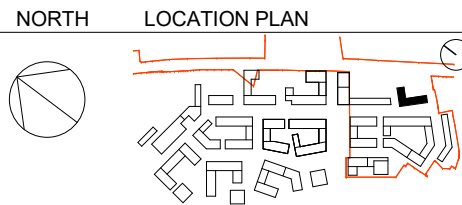
Core	Name	Area	Beds	Bedspaces
H1	3B-5P-01-W	102.01 m <sup>2</sup>	3	5

3B-5P-01-W: 2



**BARRATT**  
— LONDON —

**MAKOWER ARCHITECTS**  
24-26 Great Suffolk Street  
Bankside, London SE1 0UE  
telephone +44 (0)20 7100 5550  
enquiries@makowerarchitects.com



DATE	REV	DESCRIPTION	CHK
160930	1	PLANNING APPLICATION ISSUE	JR
161125	2	PLANNING APPLICATION ISSUE	JR

WEST HENDON PHASE 4 REVISION

**058-H1-07-508** P2  
3B-5P-01 W

scale: 1 : 50 @ A3