

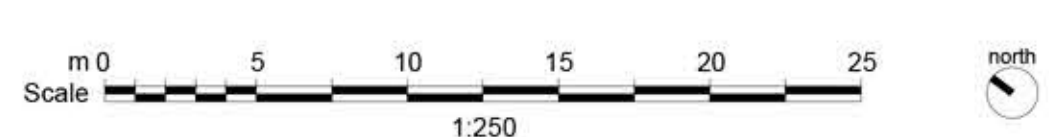
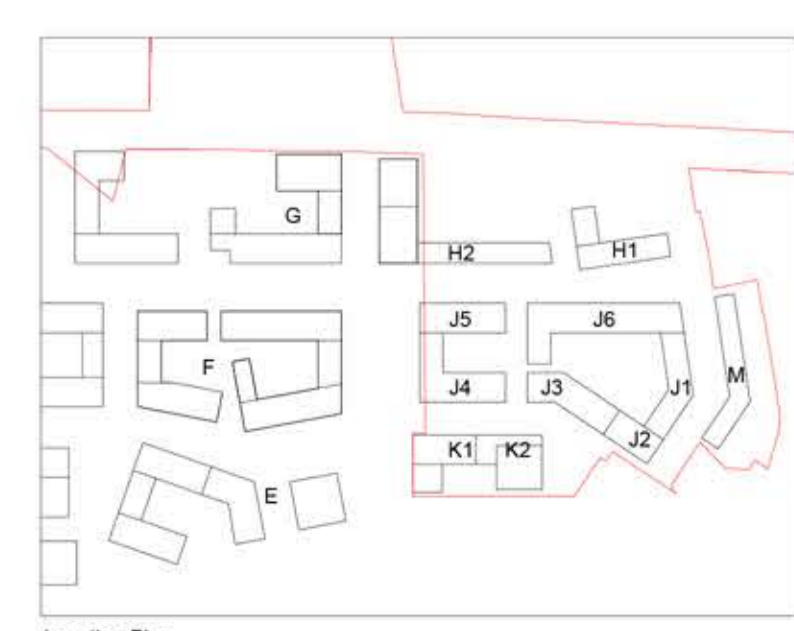


- Hard Landscaping**
- PT1 Paving Type 1: Asphalt to carriageways
 - PT2 Paving Type 2: Tegula Concrete Block paving (Permanent grey) to parking bays
Supplier Marshalls or similar approved
 - PT3 Paving Type 3: Resin Bonded Aggregate to podium gardens
 - PT4 Paving Type 4: Resin Bonded Aggregate to pedestrian walkways
 - PT5 Paving Type 5: Granite sets to speed tables-ramps
 - PT6 Paving Type 6: York Stone Sets to Perryfield way
 - PT7 Paving Type 7: York Stone Flags to special pedestrian areas and K main entrance
 - PT8 Paving Type 8: Composite decking to private gardens on podiums
Supplier Millboard or similar approved
 - PT9 Paving Type 9: Existing Footway Paving
 - ET1 Edge Type 1: Aluminium Edge
 - FT1 Furniture type 1: Backless Bench
 - FT2 Furniture type 2: Sheffield Cycle Store
 - FT3 Furniture type 3: Castle Tree Grille
Supplier Green Blue Urban or similar approved
 - FT4 Furniture type 4: Escoflet Floor
Supplier Marshalls or similar approved
 - FT5 Furniture type 5: Escoflet Odes Stools and Desk
Supplier Marshalls or similar approved
 - FT6 Furniture type 6: Escoflet Lungo Mare Bench
Supplier Marshalls or similar approved

- FT7 Furniture type 7: Bird Bath
Supplier TBC
 - FT8 Furniture type 8: Litter Bin
Woodhouse Geo Bin, Stainless Steel
 - PL1 Play Equipment 1: Climbing Structure 2 (5-11 play)
Supplier Timberplay
 - PL2 Play Equipment 2: Balancing beam (doorstep play)
Supplier Timberplay or similar approved
 - PL3 Play Equipment 3: Tunnel (doorstep play)
Supplier Timberplay or similar approved
 - PL4 Play Equipment 4: Benches in mound (doorstep play)
Supplier TBC
- Soft Landscaping**
- Proposed Trees
 - Hedge
 - Herbaceous and Shrub Planting
 - Lawn

17	Issued for Planning	GG	03.11.2016
16	Courtyard footway widths narrowed	GG	26.10.2016
15	Adjustments to K corner	KV	28.09.2016
14	Legend updated, issued for planning	KV	27.09.2016
13	Updates parking	KV	13.09.2016
12	Updates to K, H1 and H2 gardens and J steps	KV	13.09.2016
11	Updates to disabled car park and benches	KV	12.09.2016
10	Block J podium garden updated to ASB comments, East Road updated to highway comments	KV	07.09.2016
09	Legend added, podium furniture and play equipment removed	KV	15.08.2016
08	K entrances updated, Lakeside road width, Block J moved	KV	08.08.2016
07	Proposed extended planning boundary shown	KV	15.07.2016
06	Updates to H1, H2 and streets in front of these	KV	13.07.2016
05	Updates to J Podium, footpath and highway widths	KV	08.07.2016
04	Playground next to K redrwn, amenity spaces around J	KV	01.07.2016
03	Block J podium, playground next to K redrwn, parking, street trees, Lakeside	KV	15.06.2016
02	Scale changed, lifts removed from Block J podium	KV	02.06.2016
01	Issued for information	MR	19.05.2016
00	Issued for information	MR	22.04.2016
rev	details	by	date

Disclaimer
 1. This drawing is the property of Cameo + Partners Ltd.
 2. It must not be copied or reproduced without written consent.
 3. Do not scale from this drawing.
 4. Check all dimensions on site before setting out.



cameo + partners
 design studio

Project
West Hendon Phase 4

Drawing
Landscape Coloured Masterplan

Scale
1:250@A0

Drawing No.
C0044 L101

Purpose of Issue:
 P = design information / P = planning / T = tender / C = construction / B = as built
 Drawing sheet size - A0

Checked By
MM

Drawn By
KV

Revision
17

© Cameo & Partners