

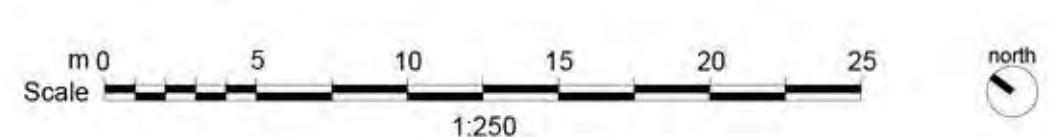
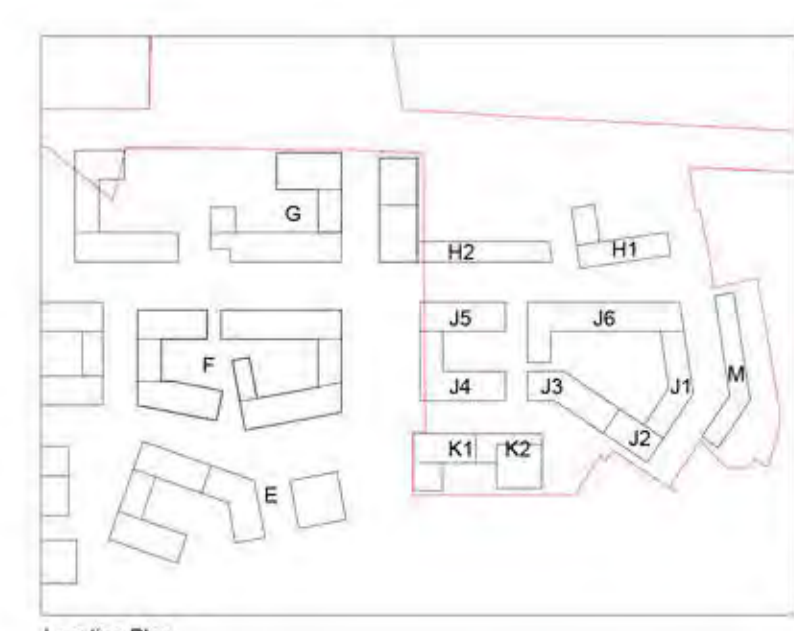
- Site Boundary
- Hard Landscaping**
- P11 Paving Type 1: Asphalt to carriageways
- P12 Paving Type 2: Tegula Concrete Block paving (Permanent grey) to parking bays
Supplier: Marshalls or similar approved
- P13 Paving Type 3: Resin Bonded Aggregate to podium gardens
- P14 Paving Type 4: Resin Bonded Aggregate to pedestrian walkways
- P15 Paving Type 5: Granite sets to speed tables-camps
- P16 Paving Type 6: York Stone Sets to Perryfield way
- P17 Paving Type 7: York Stone Flags to special pedestrian areas and K main entrance
- P18 Paving Type 8: Compostable decking to private gardens on podiums
Supplier: Millboard or similar approved
- P19 Paving Type 9: Existing Footway Paving
- E11 Edge Type 1: Aluminium Edge
- F11 Furniture type 1: Backless Bench
- F12 Furniture type 2: Sheffield Cycle Store
- F13 Furniture type 3: Castle Tree Grille
Supplier: Green Blue Urban or similar approved
- F14 Furniture type 4: Ecofelt Floor
Supplier: Marshalls or similar approved
- F15 Furniture type 5: Ecofelt Odor Stools and Desk
Supplier: Marshalls or similar approved
- F16 Furniture type 6: Ecofelt Longo Mire Bench
Supplier: Marshalls or similar approved

- P17 Furniture type 7: Bird Bath
Supplier: TBC
- P18 Furniture type 8: Litter Bin
Woodhouse Geo Bin, Stainless Steel
- P14 Play Equipment 1: Climbing Structure 2 (5-11 play)
Supplier: Timberplay
- P12 Play Equipment 2: Balancing beam (doorstep play)
Supplier: Timberplay or similar approved
- P13 Play Equipment 3: Tunnel (doorstep play)
Supplier: Timberplay or similar approved
- P14 Play Equipment 4: Benches in mound (doorstep play)
Supplier: TBC

- P18 Soft Landscaping
- P18 Proposed Trees

04	Issued for Planning	GG	03.11.2016
03	Adjustments to K corner	KV	28.09.2016
02	Litter bins added	KV	27.09.2016
01	Updates to South street pavement	KV	20.09.2016
00	First Issue	KV	19.09.2016
rev	details	by	date

Disclaimer
 1. This drawing is the property of Cameo + Partners Ltd.
 2. It must not be copied or reproduced without written consent.
 3. Do not scale from this drawing.
 4. Check all dimensions on site before setting out.



cameo + partners
 Cargo Works - ET 5.04
 1-2 Hatfield
 Watling
 London
 SE1 1PG
 Company Registered No: 8756613
 T: 0203 1760 130
 E: info@cameopartners.com

Project: **West Hendon Phase 4**

Drawing: **Hard Landscape Plan Ground Floor**

Scale: 1:250@A0	Checked By: MM	Drawn By: KV
Drawing No: C0044 L200		Revision: 04

Purpose of Issue:
 D = design information / P = planning / T = tender / C = construction / B = as built
 Drawing sheet size - A0
 © Cameo & Partners